

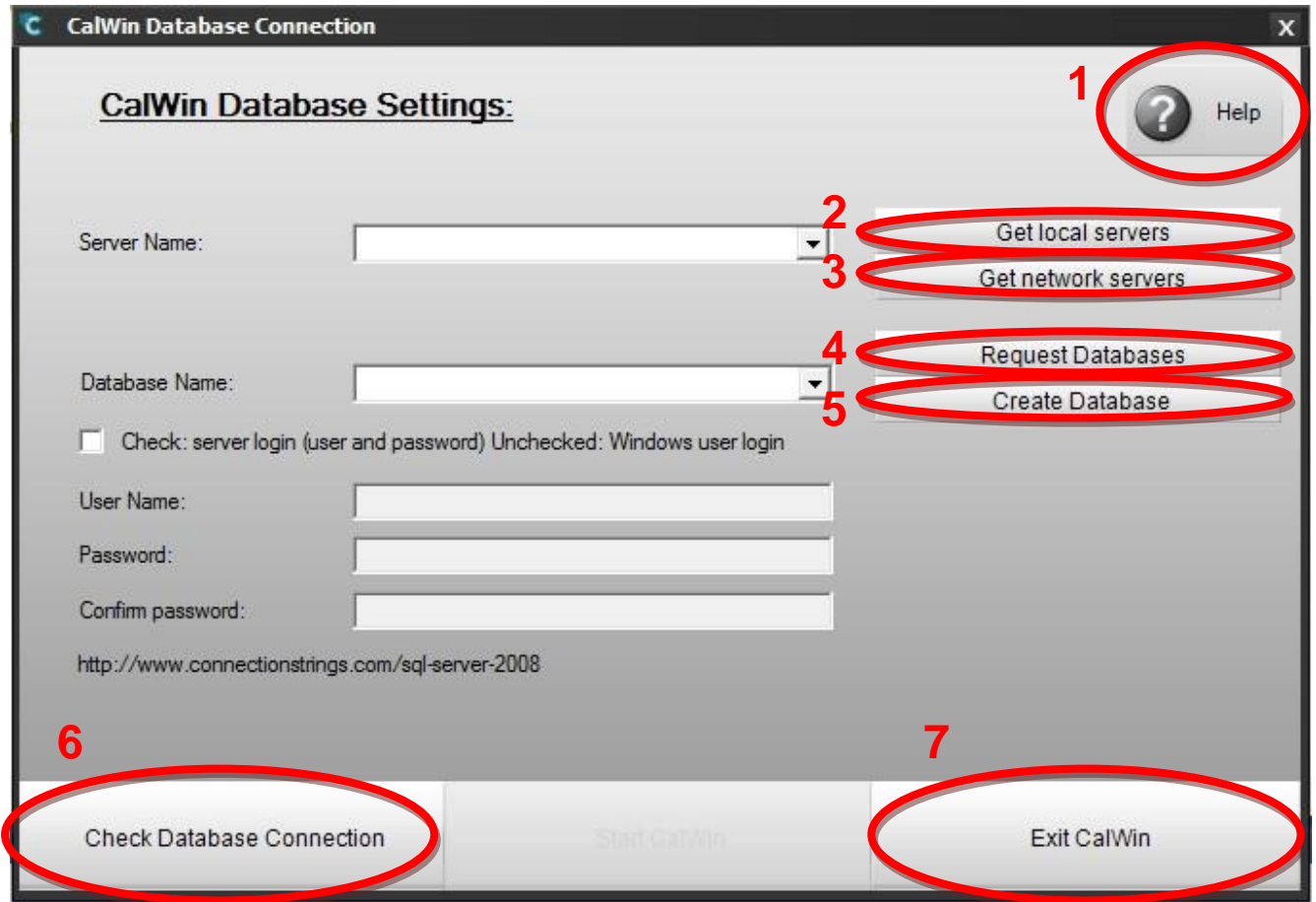
CalWin Database Setup

How to setup the initial database

JKU
14.07.2014

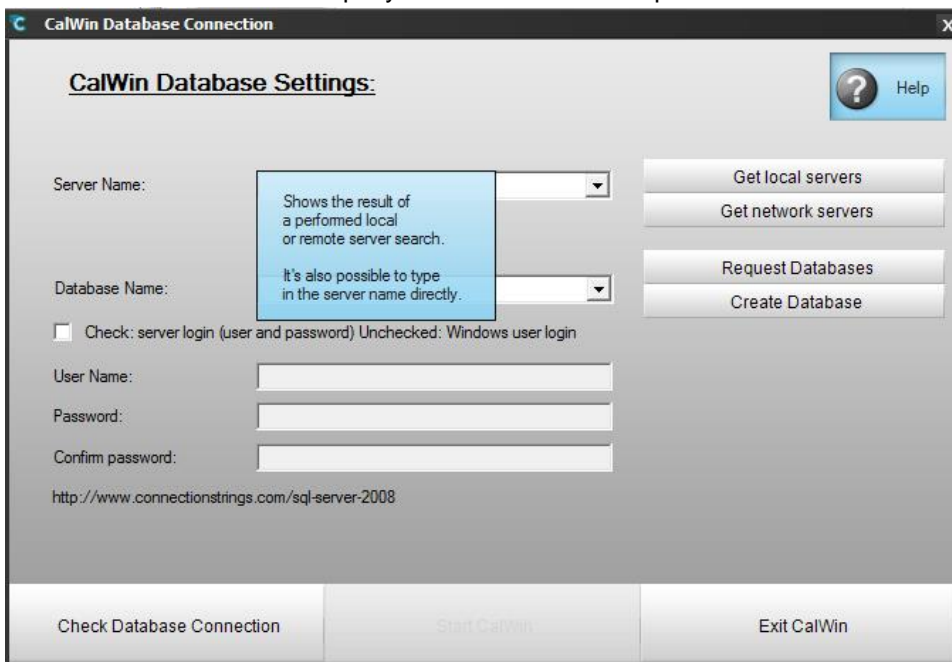
Content	
1 Setup Database.....	3
1.1 Helpsystem	3
1.2 Get local servers.....	4
1.3 Get network servers.....	4
1.4 Request Databases	5
1.5 Create Database.....	5
1.5.1 Create a completely new CalWin Database	5
1.5.2 Select an available database where no CalWin tables have been created yet.....	5
1.6 Check Database Connection	6
1.6.1 Server is not accessible.....	6
1.6.2 Server is accessible	6
1.7 Exit CalWin	7
1.8 Troubleshooting	7

1 Setup Database



1.1 Helpsystem

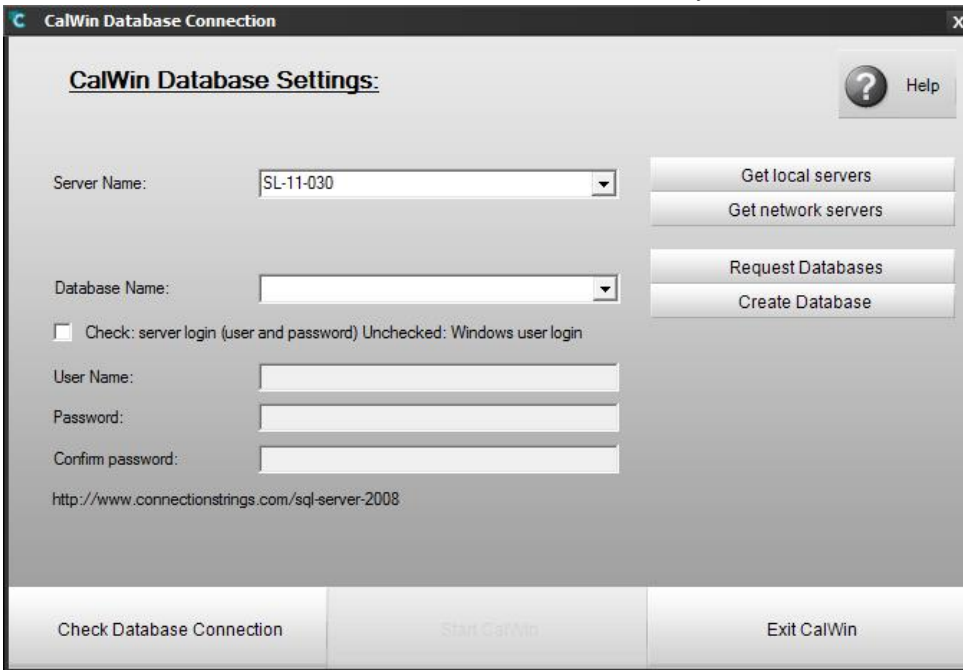
Aktivates/deactivates the Help-System and shows tooltips with additional information.



1.2 Get local servers

Searches the local PC (where CalWin is installed) for a Microsoft SQL Server installation and shows the found server(s) in the “Server Name”-combo box.

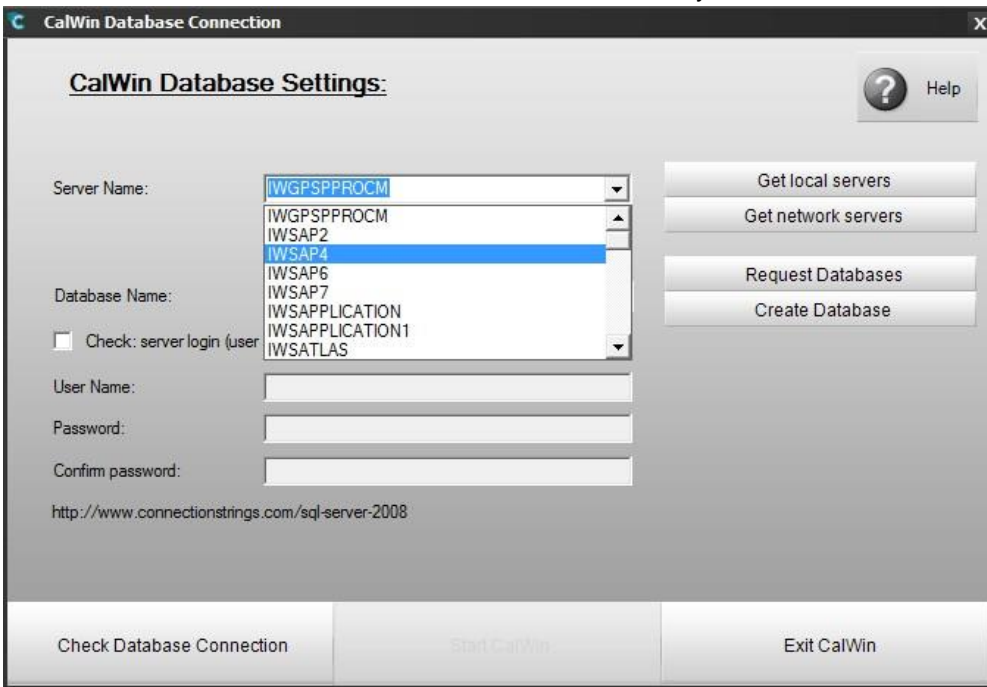
If the server name is known, it can also be entered manually.



1.3 Get network servers

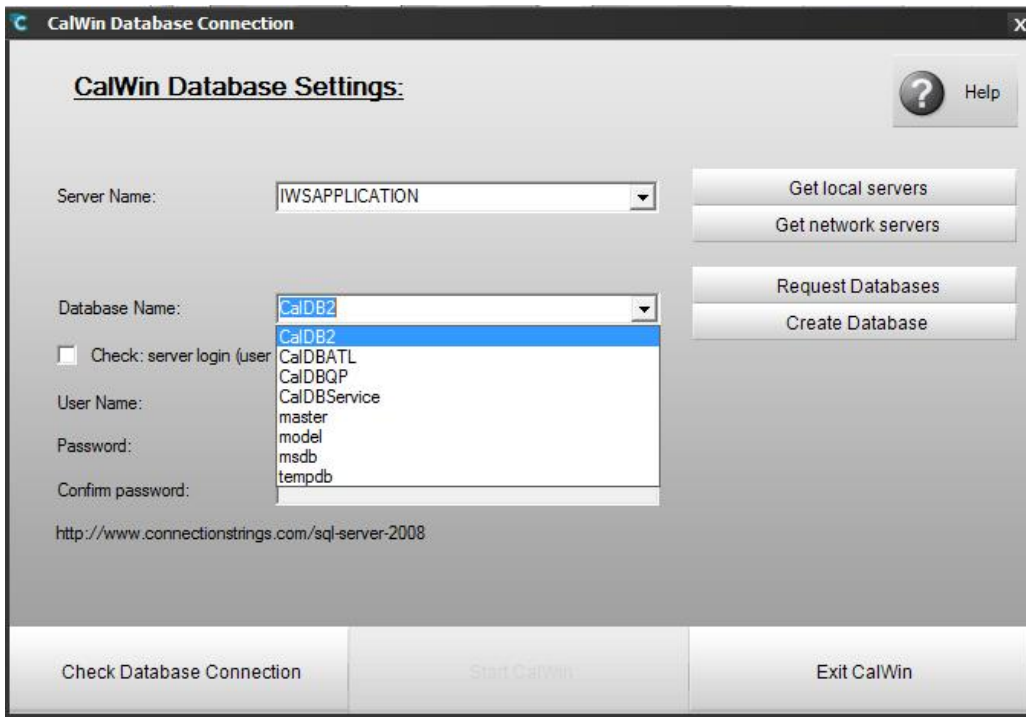
Searches the available network for a Microsoft SQL Server installation and shows the found server(s) in the “Server Name”-combo box.

If the server name is known, it can also be entered manually.



1.4 Request Databases

Searches for the available databases of the selected server and shows the result in the “Database Name”- combo box.



1.5 Create Database

If you want to give the user access to a database there are 2 possible ways to manage it. During the installation of the Microsoft SQL Server the administrator can restrict the access to:

- 1. Windows user login:** this option is commonly selected if the Microsoft SQL Server is installed locally on the same computer where CalWin is installed. The currently logged in Windows user has full access to the server.
In this case the “server login” check-box must be unchecked.
- 2. Server login:** if the Microsoft SQL Server is installed on a server, this option is commonly selected. Therefore the administrator has to create a user and a password to access the server.
In this case the “server login” check-box must be checked and the user name, the password and the confirmation of the password must be entered in the textboxes.

1.5.1 Create a completely new CalWin Database

Select a server, the login option (windows login or server login as described above) and enter a new database name that is not listed in the combo box.

1.5.2 Select an available database where no CalWin tables have been created yet

Select a server, the login option (windows login or server login as described above) and select a database name.

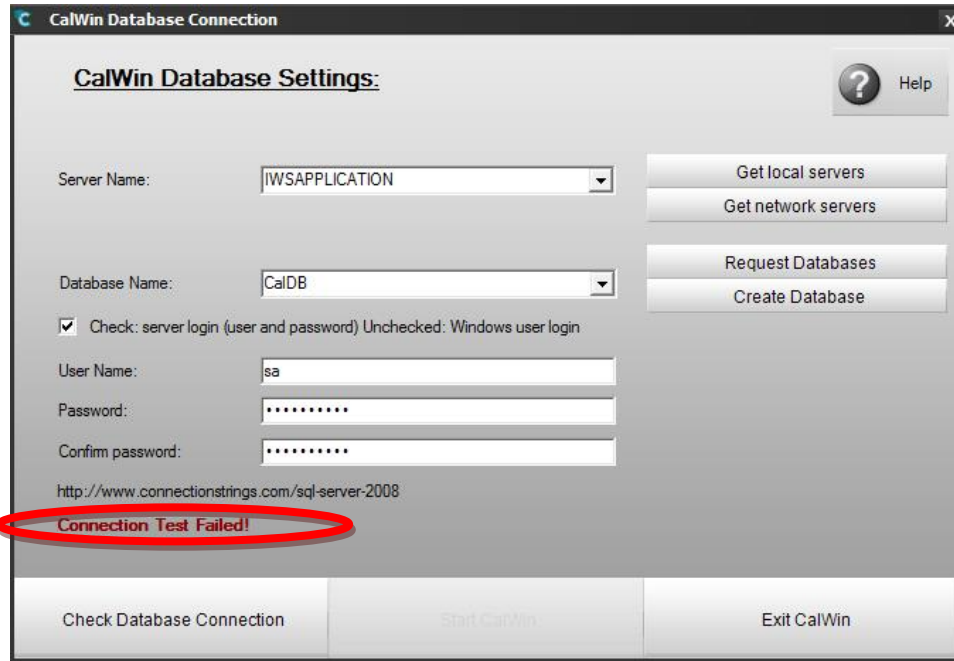
Now you can press the “Create Database” button and the database tables that are used by CalWin are created.

1.6 Check Database Connection

The next step is to press the “Check Database Connection”-button and CalWin checks if the database on the server is accessible.

1.6.1 Server is not accessible

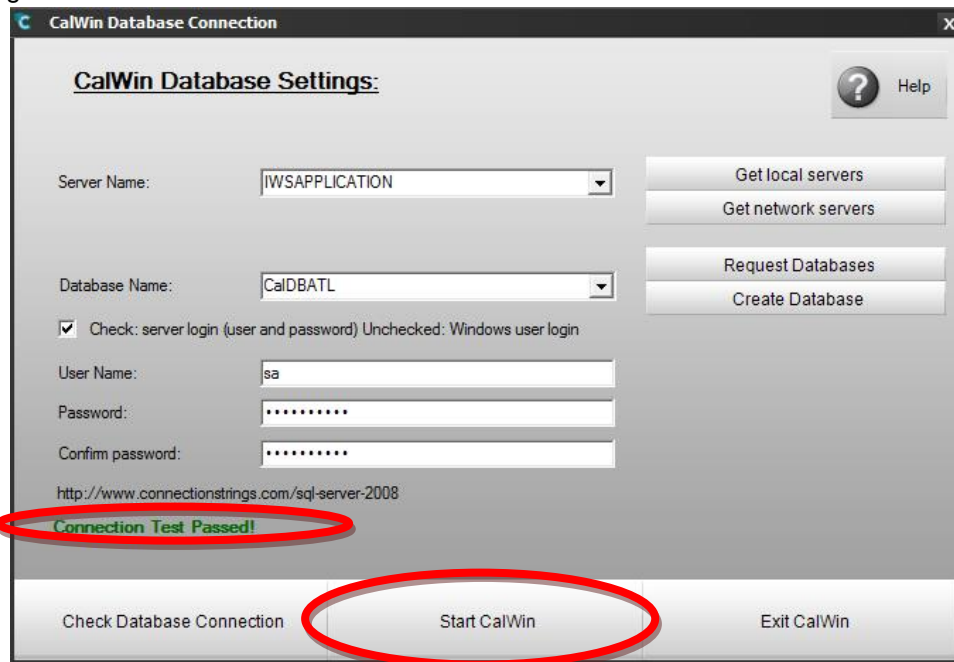
If it's not possible to access the database on the server, the connection test fails.



Check the login information and retry the login.

1.6.2 Server is accessible

If it's possible to access the database on the server, the connection test passes and the “Start CalWin”-button gets activated.



Now you can press the “Start CalWin” button and the program starts.

1.7 Exit CalWin

If you want to quit the database configuration you can press the “Exit CalWin”-button and the programs closes.

1.8 Troubleshooting

If you run into problems during the database installation/setup you can create the database and the CalWin database tables manually, too.

You can download the Microsoft SQL Server Management Studio from the Microsoft homepage. Microsoft SQL Server Management Studio Express is a free, integrated environment for accessing, configuring, managing, administering, and developing all components of SQL Server, as well as combining a broad group of graphical tools and rich script editors that provide access to SQL Server to developers and administrators of all skill levels.

The template script for creating the CalWin database can be found on the PC where CalWin is installed under the following folder:

My Documents/CalWin/SQL/

- If you click the “Create Database” button, CalWin creates a SQL-script called “CreateScript_copy.sql” with the entered information (server name, database name,...). If all these settings are correct you can run this script in the ***Microsoft SQL Server Management Studio***. You can also adjust the script.
- You can find the “CreateScript.sql” there. **This script is the basic template SQL-script and should never be changed directly**. If you want to use this script for running on the ***Microsoft SQL Server Management Studio*** you should copy it and adjust the values.